

# LUCKY LADY

FORTUNE TELLER GAME

COIN CONCEPTS INC.

908-390-9009

## POWER ON SEQUENCE:

- 1) WHITE G.I. BULB LIGHTS - (RIGHT) CEILING OF GAME
- 2) AUDIO SPEECH 'SAYS': "RED - GREEN - BLUE"
- 3) CRYSTAL BALL COLORED LAMPS FLASH  
*RED - GREEN - BLUE*
- 4) FIGURE MOVES A BIT

## GAME PLAY:

- 1) INSERT COIN IN MECH. (HARD METERED INSIDE DOOR)
- 2) YOUR FORTUNE IS 'TOLD' BY LUCKY LADY FIGURE WITH MOTION, CRYSTAL BALL LIGHT SHOW AND FLASHING CAT EYES. (LEFT) CEILING WHITE LAMP WILL LIGHT !
- 3) AT END OF FORTUNE, A PREDICTION CARD IS DISPENSED.
- 4) END OF GAME.

## \*\*\*NOTES:\*\*\*

- 1) CARD DISPENSER: 'CARD WEIGHT' MUST BE ON TOP OF CARD STACK TO DISPENSE CARDS PROPERLY!
- 2) CREDITS ARE ESCROWED, NO LOCK-OUT COILS.

LUCKY LADY DIPSWITCH SETTINGS

VER 8

-----  
USA

DIP SWITCH

1 ON = SOUND IN ATTRACT

1 OFF = SOUND OFF

2 ON = 2 COINS PER PLAY

2 OFF = 1 COIN PER PLAY

3 ON = ENABLE CARD DISPENSER

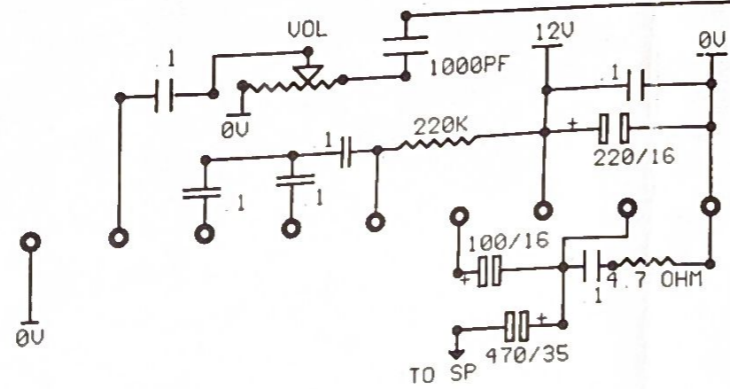
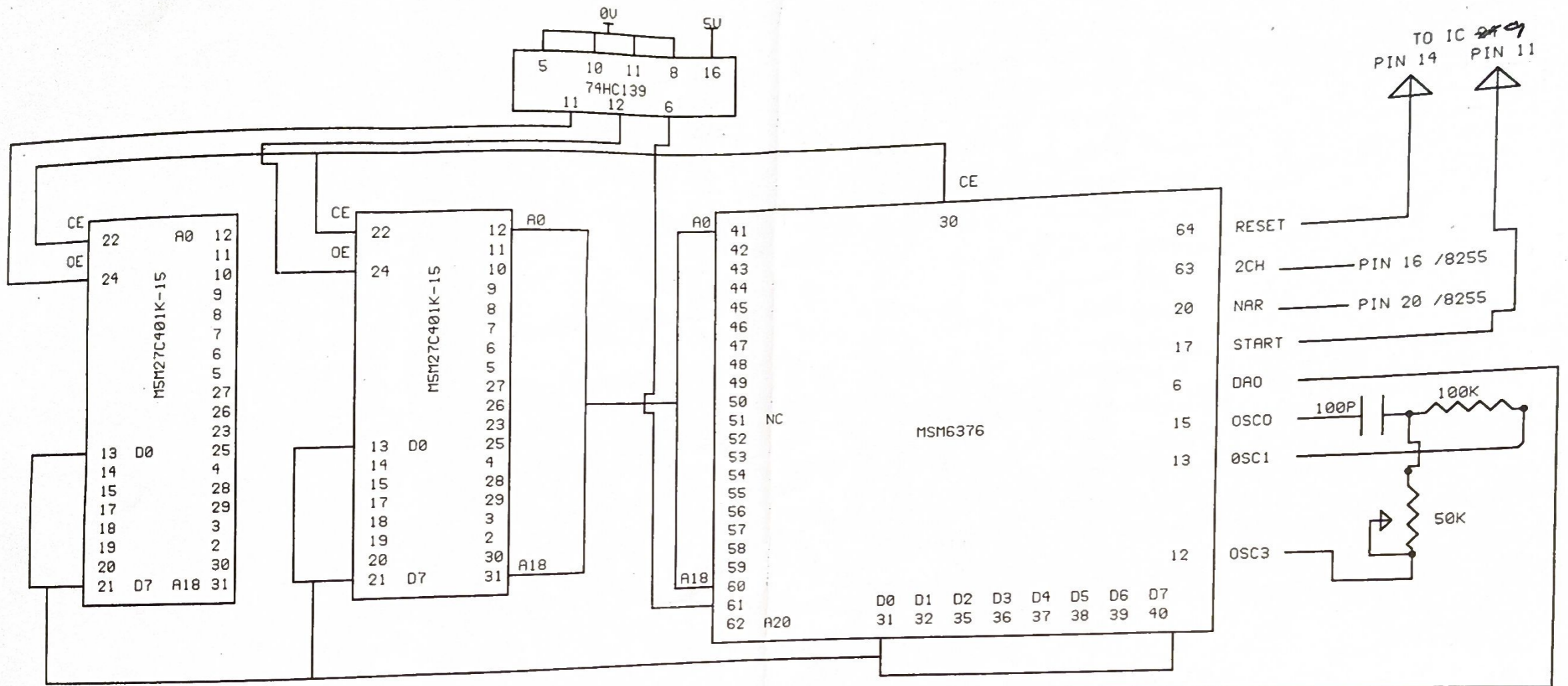
3 OFF = DISABLE " "

4 ON = HEAD MOTER (ON) IN ATTRACT MODE

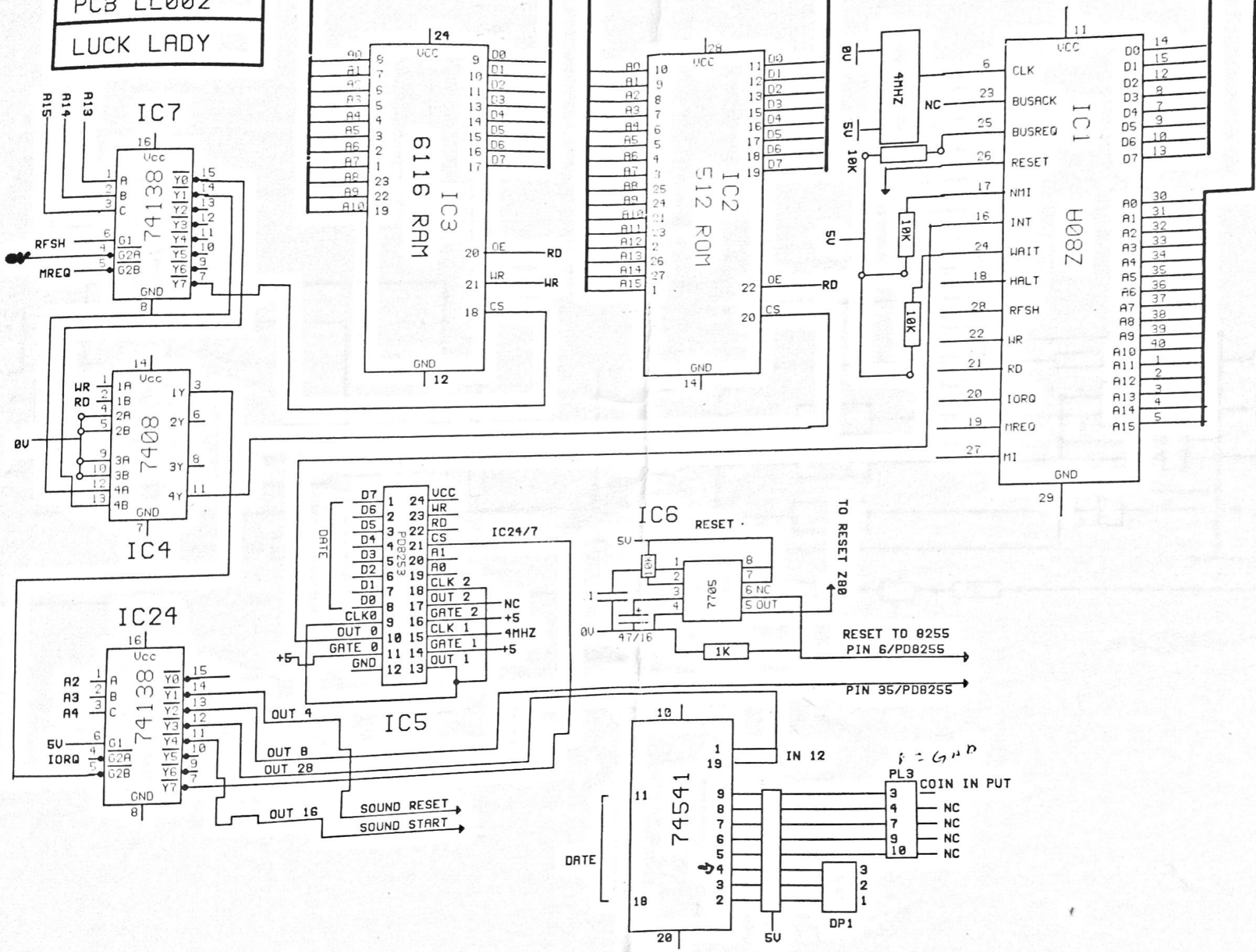
4 OFF = DISABLE

V8 PROGRAM ONLY \*

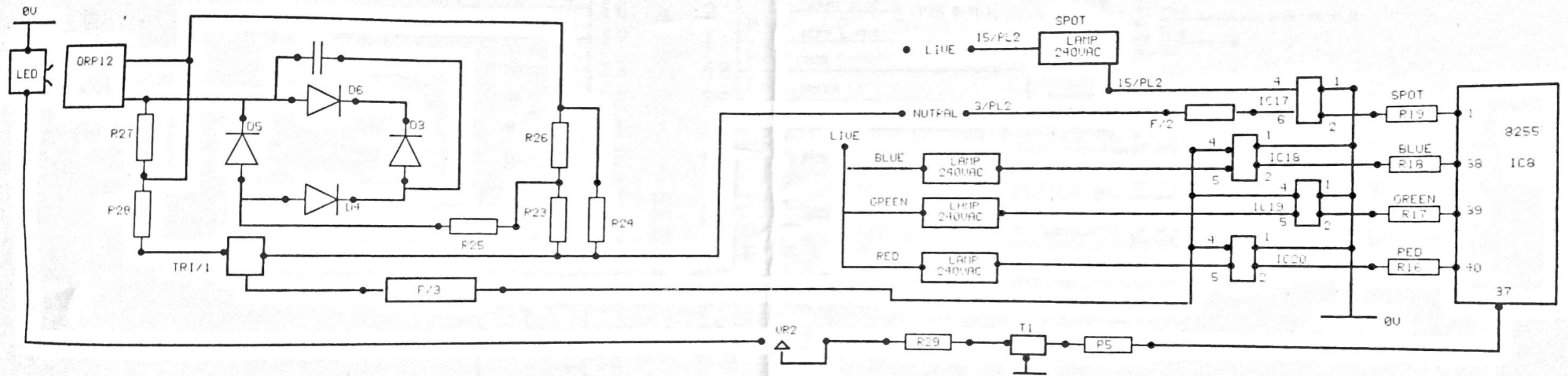


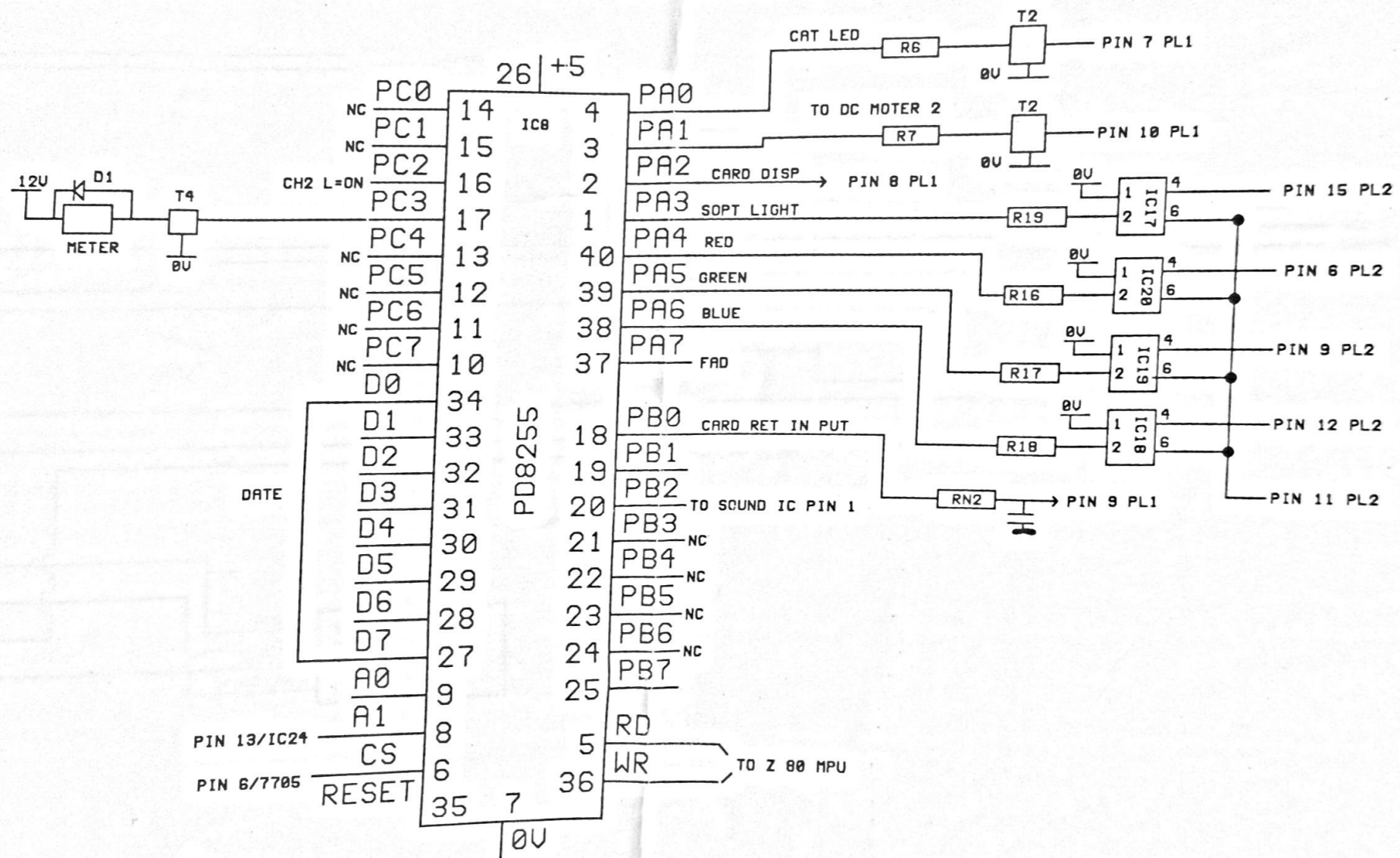


LOGIC  
 MPU  
 DATE 9/9/96  
 PCB LL002  
 LUCK LADY

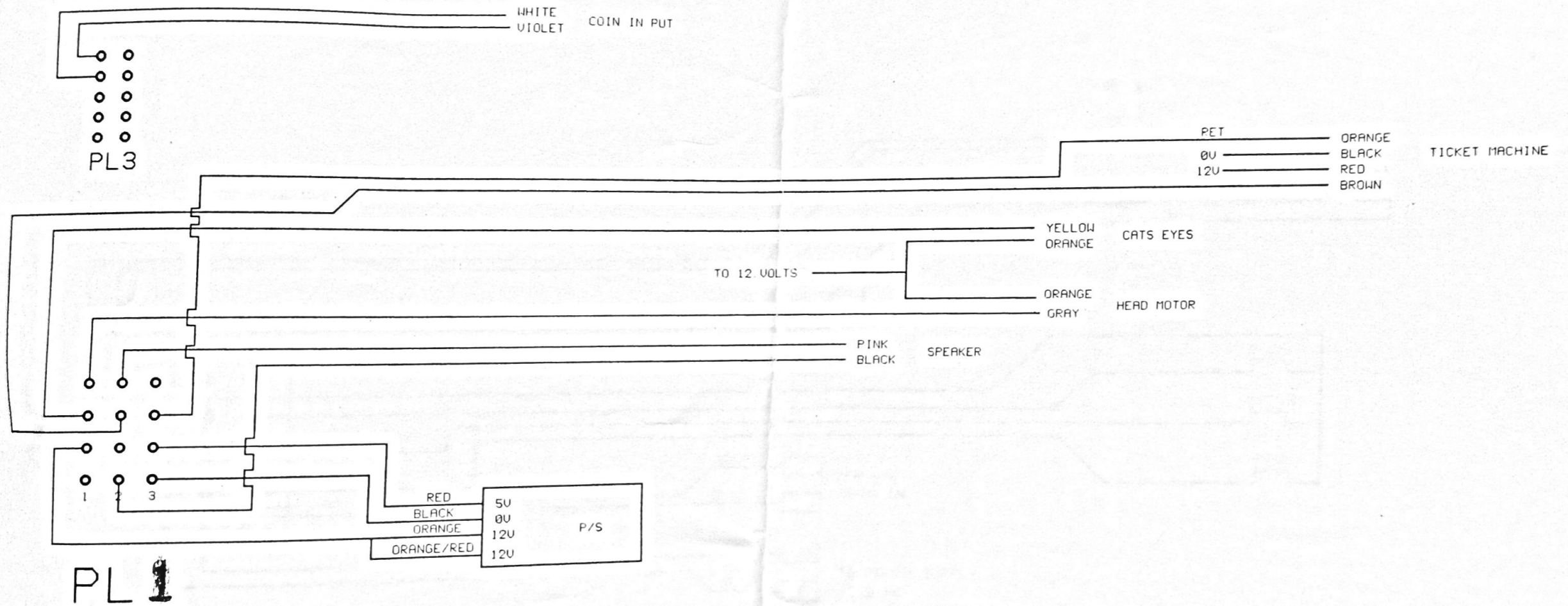




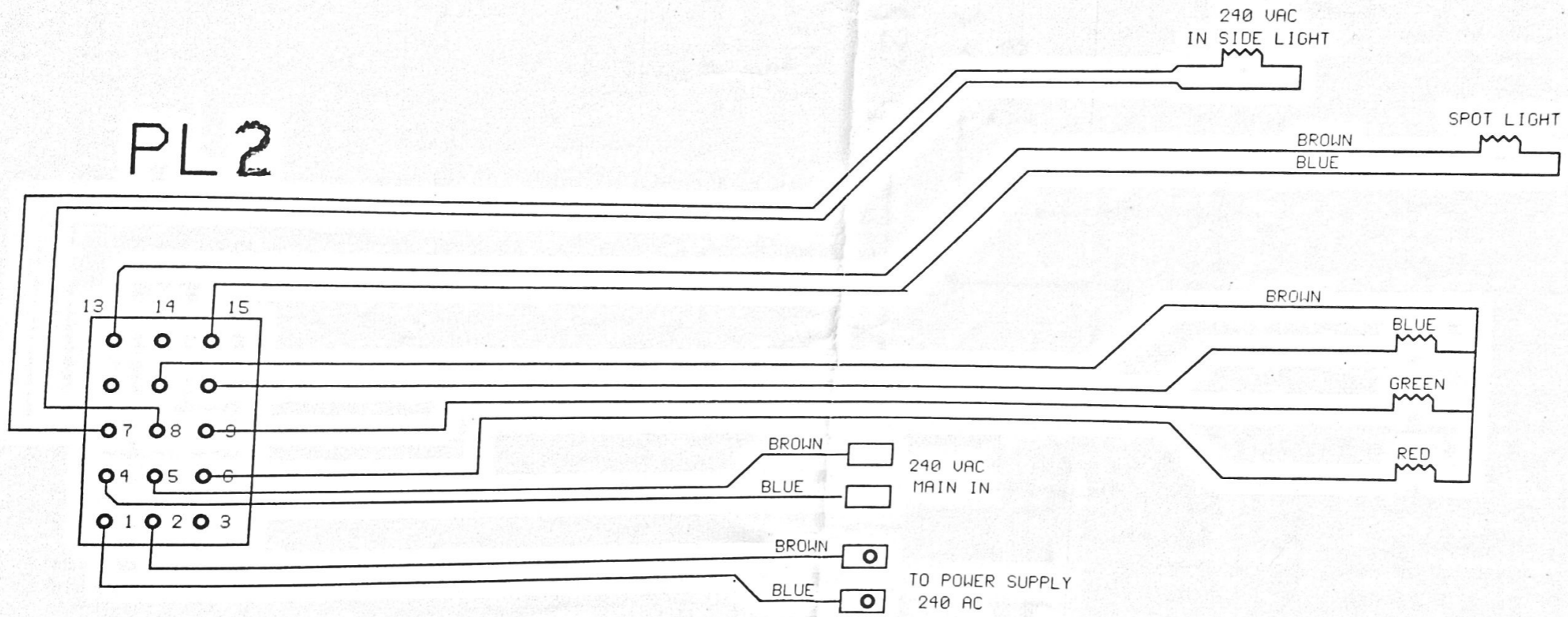






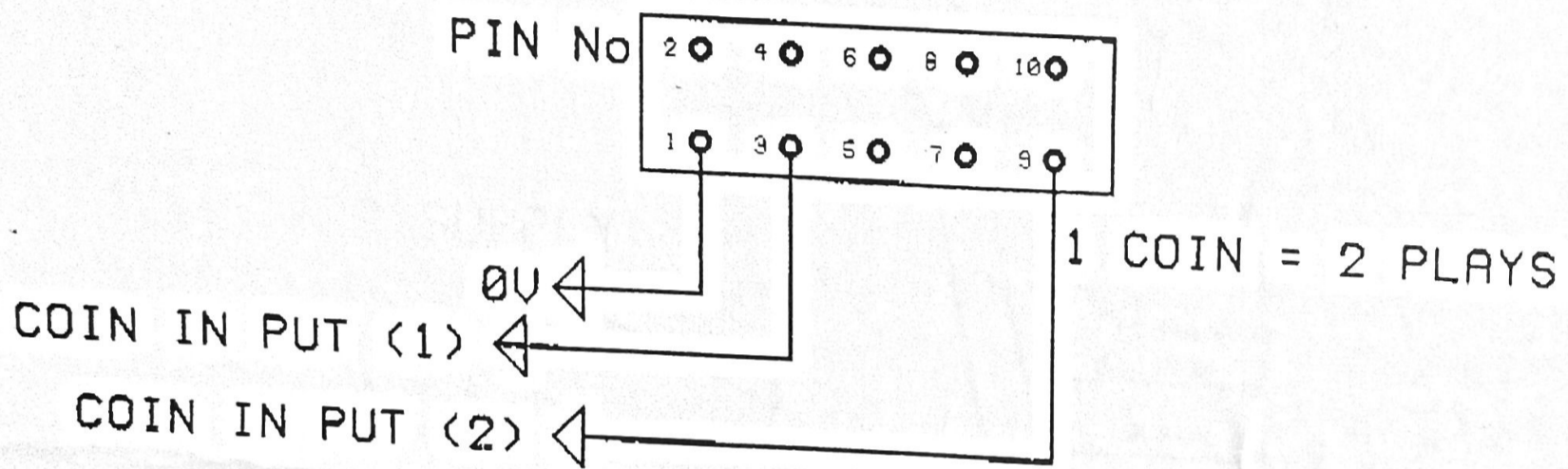


PL 2





# PL3 PROGRAM No V8 ONLY



No. 8421 P. 1/4

SEGA AMUSEMENTS

19. Feb. 1997 17:44



# LUCKY LADY 120 - 240 STEPUP WIRING

